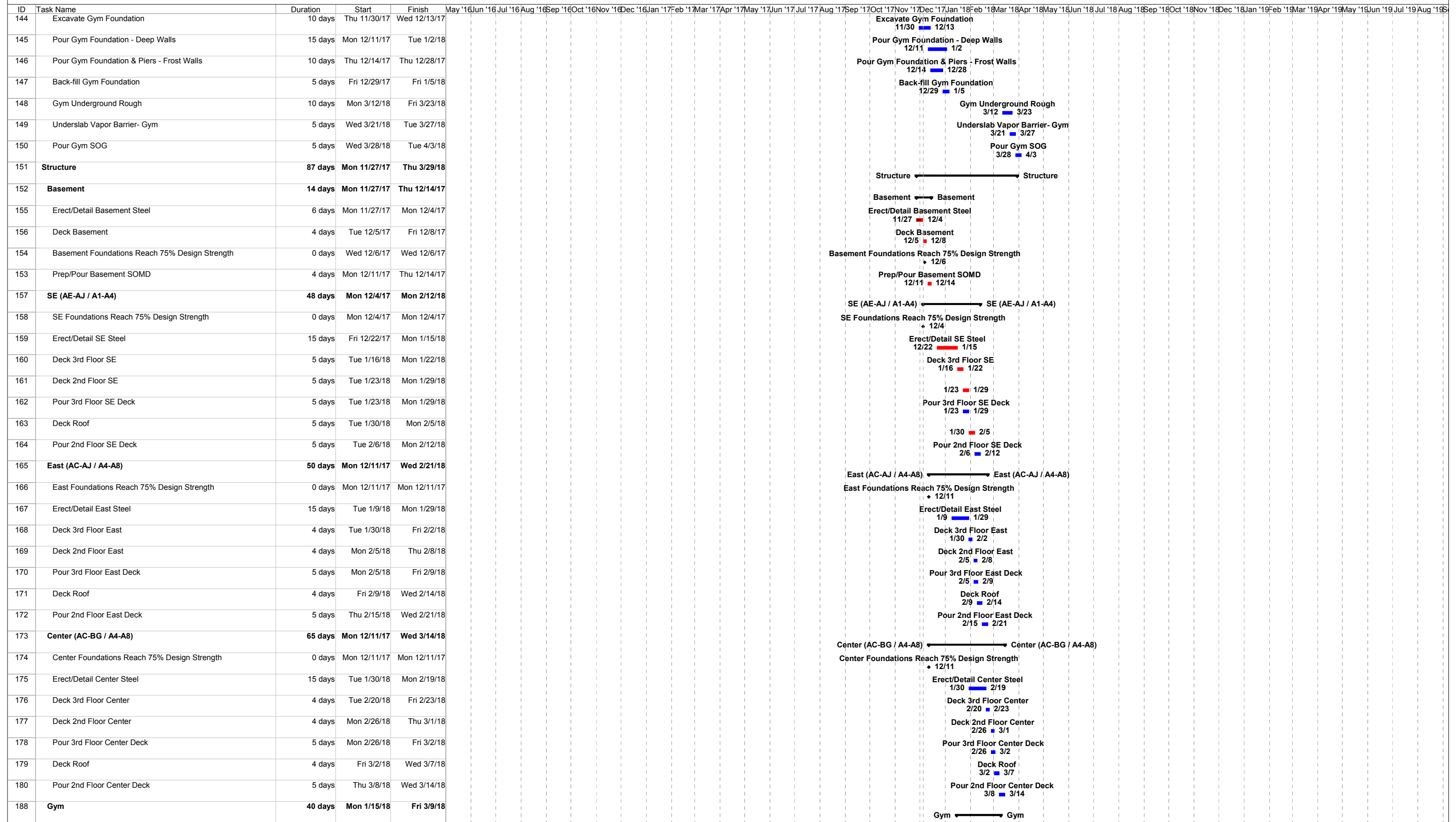
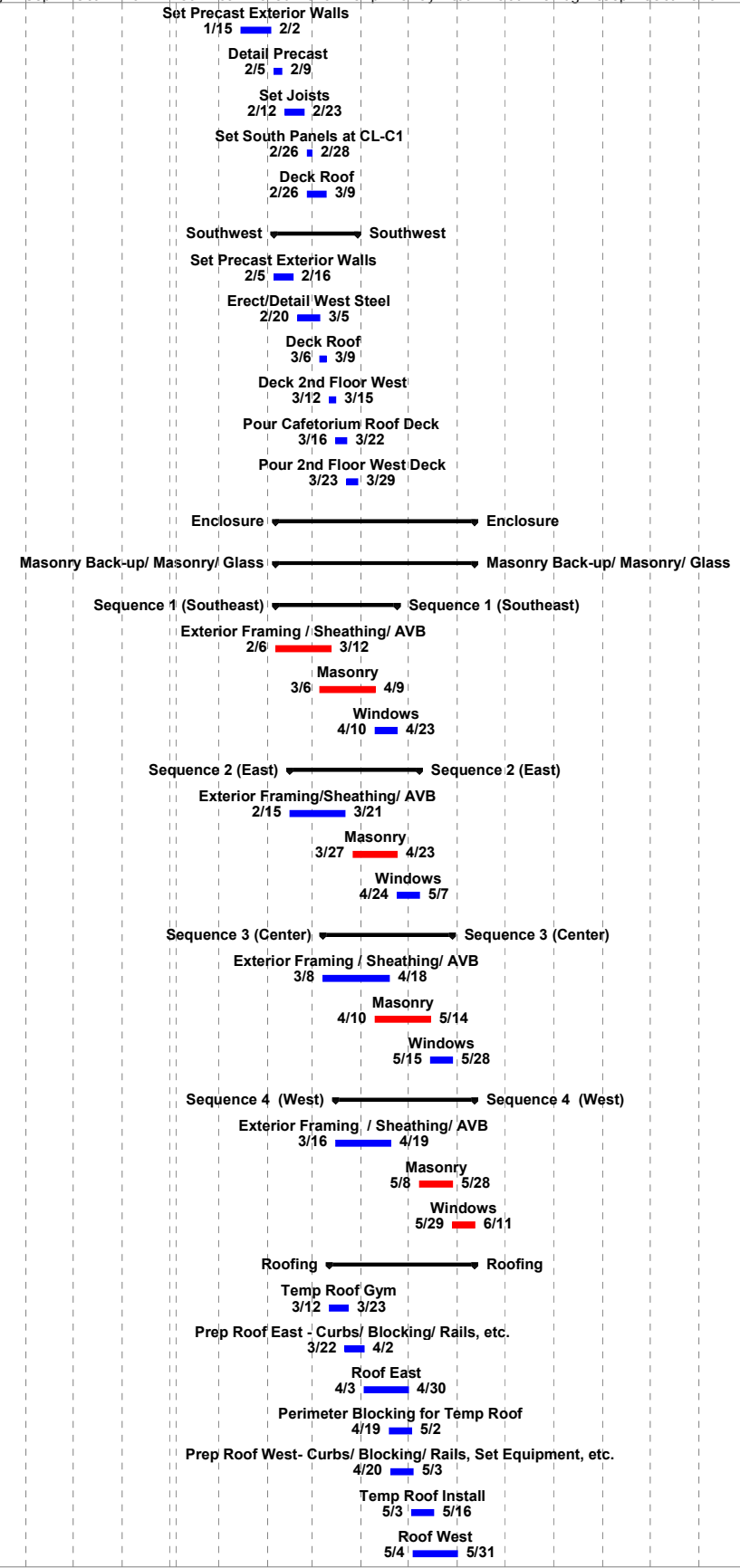


CCSD 181  
 NEW HINSDALE MIDDLE SCHOOL  
 Project Schedule  
 12-1-2017





ID	Task Name	Duration	Start	Finish
189	Set Precast Exterior Walls	15 days	Mon 1/15/18	Fri 2/2/18
190	Detail Precast	5 days	Mon 2/5/18	Fri 2/9/18
191	Set Joists	10 days	Mon 2/12/18	Fri 2/23/18
192	Set South Panels at CL-C1	3 days	Mon 2/26/18	Wed 2/28/18
193	Deck Roof	10 days	Mon 2/26/18	Fri 3/9/18
181	<b>Southwest</b>	<b>39 days</b>	<b>Mon 2/5/18</b>	<b>Thu 3/29/18</b>
182	Set Precast Exterior Walls	10 days	Mon 2/5/18	Fri 2/16/18
183	Erect/Detail West Steel	10 days	Tue 2/20/18	Mon 3/5/18
185	Deck Roof	4 days	Tue 3/6/18	Fri 3/9/18
184	Deck 2nd Floor West	4 days	Mon 3/12/18	Thu 3/15/18
187	Pour Cafetorium Roof Deck	5 days	Fri 3/16/18	Thu 3/22/18
186	Pour 2nd Floor West Deck	5 days	Fri 3/23/18	Thu 3/29/18
194	<b>Enclosure</b>	<b>90 days</b>	<b>Tue 2/6/18</b>	<b>Mon 6/11/18</b>
195	<b>Masonry Back-up/ Masonry/ Glass</b>	<b>90 days</b>	<b>Tue 2/6/18</b>	<b>Mon 6/11/18</b>
196	<b>Sequence 1 (Southeast)</b>	<b>55 days</b>	<b>Tue 2/6/18</b>	<b>Mon 4/23/18</b>
197	Exterior Framing / Sheathing/ AVB	25 days	Tue 2/6/18	Mon 3/12/18
198	Masonry	25 days	Tue 3/6/18	Mon 4/9/18
199	Windows	10 days	Tue 4/10/18	Mon 4/23/18
200	<b>Sequence 2 (East)</b>	<b>58 days</b>	<b>Thu 2/15/18</b>	<b>Mon 5/7/18</b>
201	Exterior Framing/Sheathing/ AVB	25 days	Thu 2/15/18	Wed 3/21/18
202	Masonry	20 days	Tue 3/27/18	Mon 4/23/18
203	Windows	10 days	Tue 4/24/18	Mon 5/7/18
204	<b>Sequence 3 (Center)</b>	<b>58 days</b>	<b>Thu 3/8/18</b>	<b>Mon 5/28/18</b>
205	Exterior Framing / Sheathing/ AVB	30 days	Thu 3/8/18	Wed 4/18/18
206	Masonry	25 days	Tue 4/10/18	Mon 5/14/18
207	Windows	10 days	Tue 5/15/18	Mon 5/28/18
208	<b>Sequence 4 (West)</b>	<b>62 days</b>	<b>Fri 3/16/18</b>	<b>Mon 6/11/18</b>
209	Exterior Framing / Sheathing/ AVB	25 days	Fri 3/16/18	Thu 4/19/18
210	Masonry	15 days	Tue 5/8/18	Mon 5/28/18
211	Windows	10 days	Tue 5/29/18	Mon 6/11/18
212	<b>Roofing</b>	<b>66 days</b>	<b>Mon 3/12/18</b>	<b>Mon 6/11/18</b>
214	Temp Roof Gym	10 days	Mon 3/12/18	Fri 3/23/18
216	Prep Roof East - Curbs/ Blocking/ Rails, etc.	8 days	Thu 3/22/18	Mon 4/2/18
217	Roof East	20 days	Tue 4/3/18	Mon 4/30/18
213	Perimeter Blocking for Temp Roof	10 days	Thu 4/19/18	Wed 5/2/18
218	Prep Roof West- Curbs/ Blocking/ Rails, Set Equipment, etc.	10 days	Fri 4/20/18	Thu 5/3/18
215	Temp Roof Install	10 days	Thu 5/3/18	Wed 5/16/18
219	Roof West	20 days	Fri 5/4/18	Thu 5/31/18





ID	Task Name	Duration	Start	Finish
220	Green Roof	5 days	Fri 6/1/18	Thu 6/7/18
221	Building Watertight	0 days	Mon 6/11/18	Mon 6/11/18
222	Build-out	206 days	Mon 2/12/18	Mon 11/26/18
269	3rd Floor	179 days	Mon 2/12/18	Thu 10/18/18
270	Layout/ Top Track	10 days	Mon 2/12/18	Fri 2/23/18
271	MEPFP Overhead Rough	20 days	Mon 2/26/18	Fri 3/23/18
272	Metal Studs, Door & Borrowed Light Frames	15 days	Mon 3/26/18	Fri 4/13/18
273	In-wall Rough	25 days	Mon 4/16/18	Fri 5/18/18
274	Drywall/ Tape/ Sand	20 days	Tue 5/29/18	Mon 6/25/18
275	Prime & First Coat	10 days	Tue 6/26/18	Mon 7/9/18
276	Above Ceiling Punchlist	5 days	Tue 7/3/18	Mon 7/9/18
277	Ceilings	10 days	Tue 7/10/18	Mon 7/23/18
278	Flooring	15 days	Tue 7/24/18	Mon 8/13/18
279	Lockers	5 days	Tue 7/24/18	Mon 7/30/18
280	MEPFP Trim	15 days	Tue 8/14/18	Mon 9/3/18
281	Millwork/ Lab Equipment	20 days	Tue 9/4/18	Mon 10/1/18
282	Install Doors & Glass	10 days	Tue 9/4/18	Mon 9/17/18
284	Final Paint	10 days	Tue 10/2/18	Mon 10/15/18
283	Architect Punchlist	3 days	Tue 10/16/18	Thu 10/18/18
253	2nd Floor	198 days	Thu 2/22/18	Mon 11/26/18
254	Layout/ Top Track	10 days	Thu 2/22/18	Wed 3/7/18
255	MEPFP Overhead Rough	40 days	Thu 3/8/18	Wed 5/2/18
256	Metal Studs, Door & Borrowed Light Frames	10 days	Thu 4/19/18	Wed 5/2/18
257	In-wall Rough	35 days	Thu 4/26/18	Wed 6/13/18
258	Drywall/ Tape/ Sand	25 days	Tue 6/12/18	Mon 7/16/18
259	Prime & First Coat	10 days	Tue 7/17/18	Mon 7/30/18
260	Above Ceiling Punchlist	5 days	Tue 7/24/18	Mon 7/30/18
261	Ceilings	20 days	Tue 7/31/18	Mon 8/27/18
262	Flooring	15 days	Tue 8/28/18	Mon 9/17/18
263	Lockers	10 days	Tue 9/18/18	Mon 10/1/18
264	MEPFP Trim	10 days	Tue 9/18/18	Mon 10/1/18
266	Install Doors & Glass	15 days	Tue 9/18/18	Mon 10/8/18
265	Millwork/ Lab Equipment	20 days	Tue 10/2/18	Mon 10/29/18
268	Final Paint	15 days	Tue 10/30/18	Mon 11/19/18
267	Architect Punchlist	5 days	Tue 11/20/18	Mon 11/26/18
223	1st Floor	189 days	Wed 3/7/18	Mon 11/26/18
224	Layout/ Top Track	10 days	Wed 3/7/18	Tue 3/20/18
225	MEPFP Overhead Rough	30 days	Wed 3/21/18	Tue 5/1/18

