

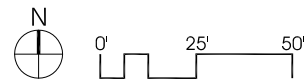
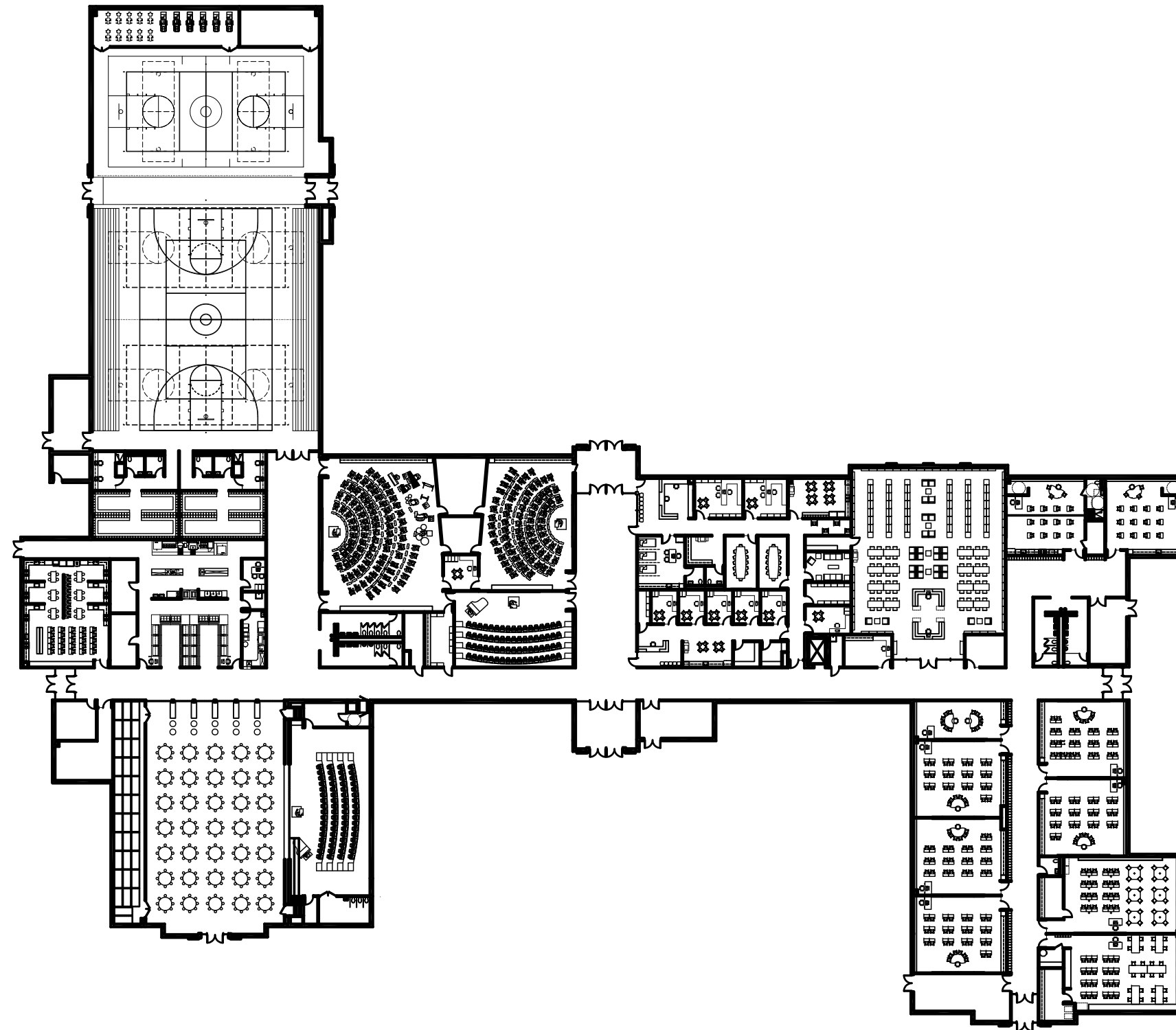


PRELIMINARY ROOM LAYOUTS

SEPTEMBER 26, 2016

HINSDALE MIDDLE SCHOOL

CORDOGAN CLARK & ASSOCIATES INC.
ARCHITECTS • ENGINEERS



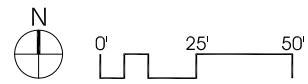
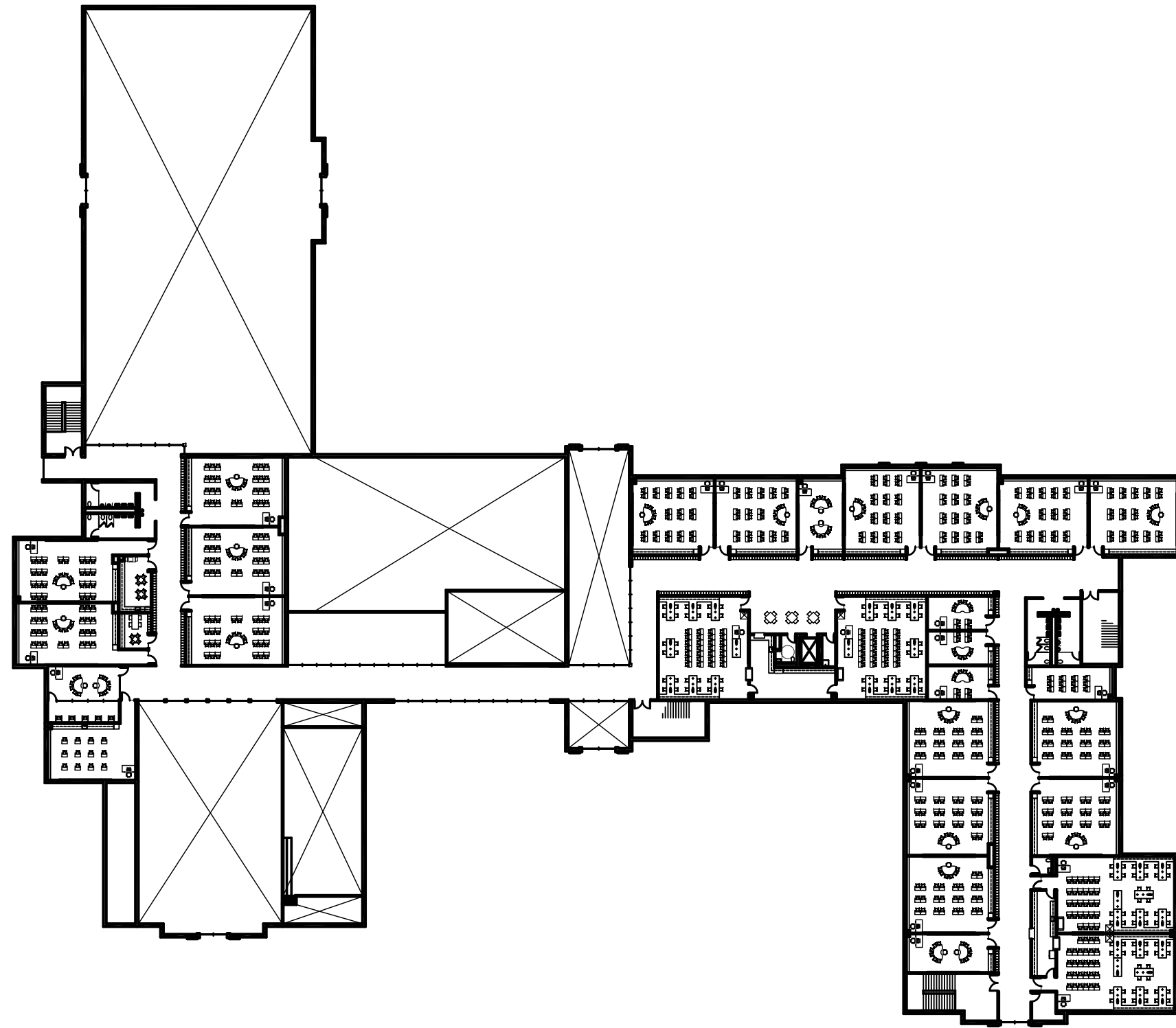
FIRST FLOOR OVERALL PLAN

HINSDALE MIDDLE SCHOOL

COMMUNITY CONSOLIDATED SCHOOL DISTRICT 181

CORDOGAN CLARK & ASSOCIATES INC.
 ARCHITECTS • ENGINEERS

SEPTEMBER 26, 2016



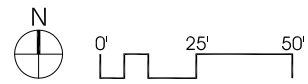
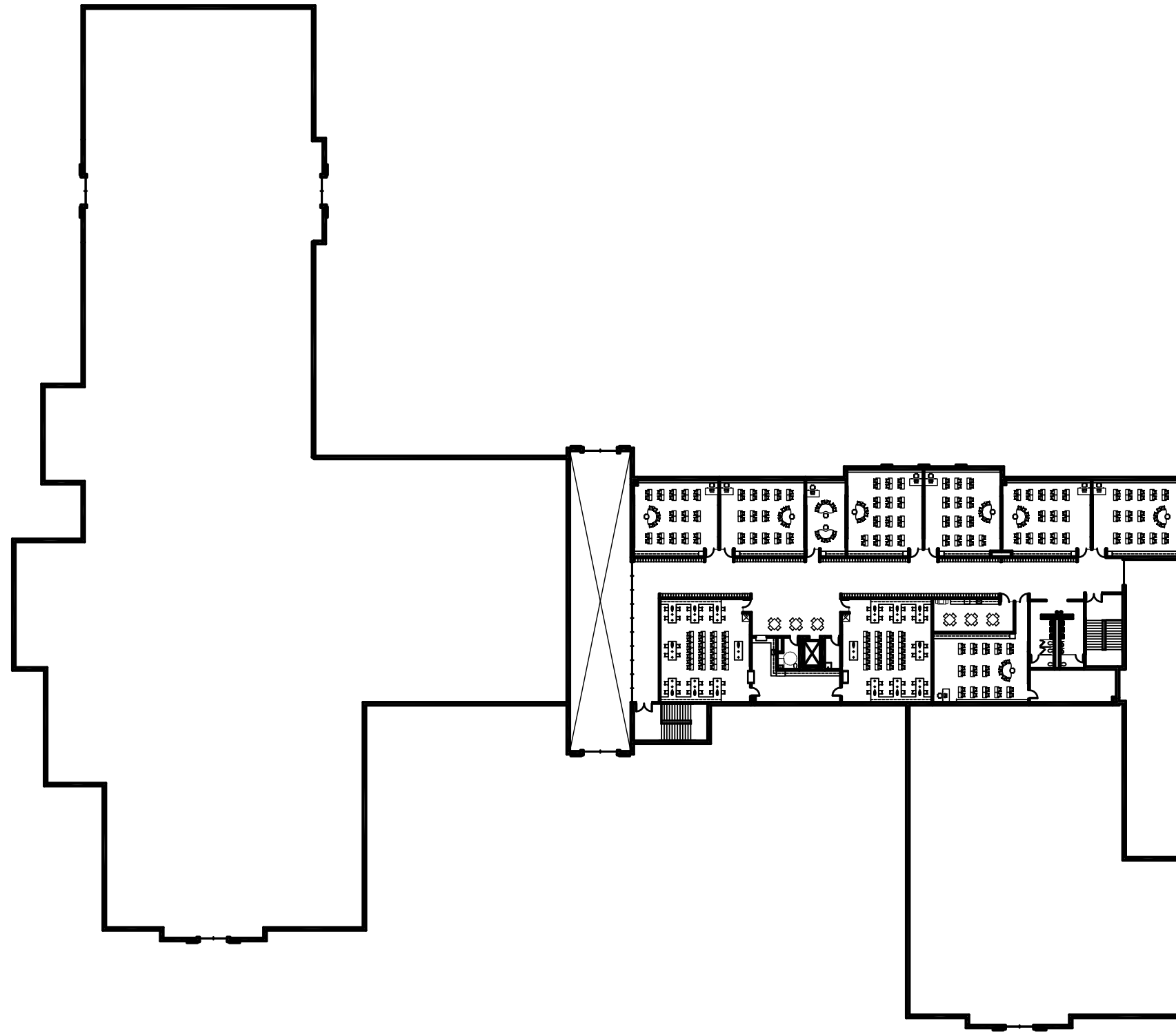
SECOND FLOOR OVERALL PLAN

HINSDALE MIDDLE SCHOOL

COMMUNITY CONSOLIDATED SCHOOL DISTRICT 181

CORDOGAN CLARK & ASSOCIATES INC.
ARCHITECTS • ENGINEERS

SEPTEMBER 26, 2016



THIRD FLOOR OVERALL PLAN

HINSDALE MIDDLE SCHOOL

COMMUNITY CONSOLIDATED SCHOOL DISTRICT 181

CORDOGAN CLARK & ASSOCIATES INC.
ARCHITECTS • ENGINEERS

SEPTEMBER 26, 2016

CCSD 181 MIDDLE SCHOOL SF BY DEPARTMENT ANALYSIS

Capacity Calculation w/ Elective Space Teaching Stations

June 10, 2016

SPACE SUMMARY	CHMS			HMS			New HMS Concept (34 CCR)		
	Gross/Net	Total Area	T/S	Gross/Net	Total Area	T/S	Gross/Net	Total Area	T/S
Core Academic Spaces (Classrooms & Science Labs)		29,140	27		33,698	34		38,065	34
Shared Labs (FACS/Applied Tech)		2,580	1		2,993	1		3,065	1.5
Learning Resource Center		2,518			4,000			4,050	
Fine Arts (Includes Stage & Chair Storage)		5,487	2		6,423	2		10,880	3
Special Education		2,046	0.1		2,356	0.1		6,560	0.40
Physical Education		10,863	2		18,651	2.4		16,270	2.4
Cafeteria & Food Service		4,793			4,814			6,681	
Administration		1,690			2,794			4,470	
Student Services		280			1,300			1,050	
Building Services		7,872			4,380			7,970	
TOTAL NET AREA:		67,269			81,409			99,061	
TOTAL GROSS AREA:	1.31	88,122		1.39	112,813		1.35	133,900	
TOTAL TEACHING STATIONS (TS)			32.1			39.5			41.3
2015/16 Enrollment		650			780			780	
BUILDING CAPACITY (# TS x 25 Per CR) @ 78% Utilization Factor		626			770			805	
BUILDING CAPACITY (# TS x 26 Per CR) @ 78% UF Utilization Factor		651			801			838	
BUILDING CAPACITY (# TS x 27 Per CR) @ 78% UF Utilization Factor		676			832			870	
BUILDING CAPACITY (# TS x 28 Per CR) @ 78% UF Utilization Factor		701			863			902	
CURRENT ENROLLMENT BUILDING UTILIZATION (25 Per TS/CR & 78% UF)		104%			101%			97%	
CURRENT ENROLLMENT BUILDING UTILIZATION (26 Per TS/CR & 78% UF)		100%			97%			93%	
CURRENT ENROLLMENT BUILDING UTILIZATION (27 Per TS/CR & 78% UF)		96%			94%			90%	
CURRENT ENROLLMENT BUILDING UTILIZATION (28 Per TS/CR & 78% UF)		93%			90%			86%	
SF / STUDENT @ 25 TS/CR PER & 78% UF		141	SF		146	SF		166	SF
SF / STUDENT @ 26 TS/CR PER & 78% UF		135	SF		141	SF		160	SF
SF / STUDENT @ 27 TS/CR PER & 78% UF		130	SF		136	SF		154	SF
SF / STUDENT @ 28 TS/CR PER & 78% UF		126	SF		131	SF		148	SF